

The logo for MI CASA SRJC is centered on the page. It features the text "MI CASA" in a large, bold, black serif font, with "SRJC" in a smaller, black sans-serif font directly below it. The text is framed by two decorative horizontal bands of colorful, stylized leaves in shades of teal, purple, orange, and yellow. This central graphic is enclosed within a large, light blue circle. The background of the entire page is white, decorated with several overlapping circles: a large light blue circle on the left, a large yellow circle on the right, and a series of smaller yellow circles arranged in a grid-like pattern across the center and right side.

MI CASA
SRJC

**WEEKLY
ANNOUNCEMENTS**

May 21, 2018

REMEMBER...

**YOU ARE
CAPABLE
OF MORE
THAN YOU
KNOW.**



IMPORTANT DATES

Ongoing

Summer & Fall
Open Registration

May 19- 25

Final Examinations

May 26

Commencement Exercises

9-11am

(SRJC Graduation Ceremony)

June 18

First day of summer classes

Update:

Questions about this or other SRJC info?

Contact your counselor.

If you need to meet with a counselor, contact us at 707-521-6066. There will be a counselor at MI CASA during the summer semester!

SCHOLARSHIP\$

click on the logos below to take you to their website for more info



FASTWEB.COM
-ONGOING



Foundation
Scholarships
-ONGOING

REMEMBER...

**THE EXPERT
IN
ANYTHING
WAS ONCE
A BEGINNER**





SPECIAL ANNOUNCEMENTS

Programa de Reunificación Familiar después de los 60 años

Este programa entre México y los Estados Unidos es para gente mayor de 60 años quienes están en buena salud y viven en México. El programa les da permiso a estas personas para visitar a sus familiares viviendo en los Estados Unidos ya que no se han visto en persona por lo menos por 10 años.

Venga y aprenda más del proceso y vea si califica. Por ahora los condados de Sonoma, Napa, Mendocino, Lake y Marin.

La presentación será proveída por la señorita Ana Salgado.

Dónde: **KBBF 1700 Corby Avenida, Suite B, Santa Rosa.**

Cuando: **31 de mayo de 2018**

Hora: **6pm**

El evento es gratis

Reserve su espacio llamando a la oficina de Rafael Vazquez **707 521-6934** y diga que quiere ir y aprender del Programa de Reunificación Familiar.

Family Reunification Program for Those Over 60

This program is an agreement between Mexico and the U.S. for those who have lived in the U.S. for over 10 years and haven't seen their parents in person to be able to bring their parents over 60 temporarily to visit. Come learn how the program works and who qualifies. Sonoma, Mendocino, Lake, Napa and Mendocino counties.

The presentation will be done by Ms. Ana Salgado.

Where: **KBBF 1700 Corby Avenida, Suite B, Santa Rosa.**

When: **May 31st of 2018**

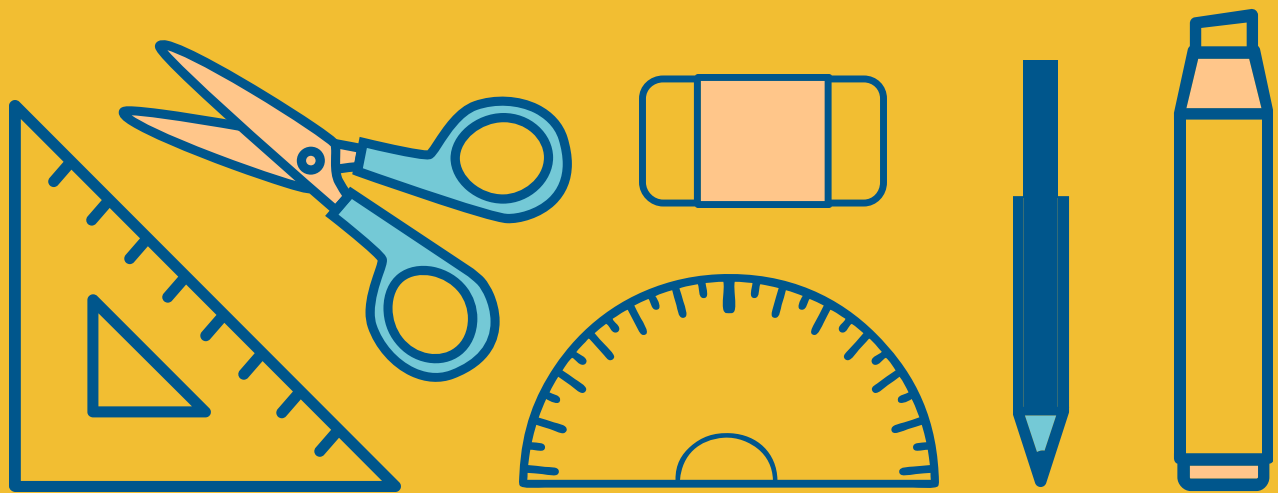
Time: **6PM**

This event is free and open to the public.

To reserve a spot please call the office of Rafael Vazquez at **707 521-6934** and say that you are wanting to attend the Family Reunification Program.

NEED HELP WITH YOUR MATH ASSIGNMENTS?

FREE MATH TUTORING
MI CASA, GARCIA 860
FINALS WEEK:
MONDAY & WEDNESDAY
10AM-12PM



RECEIVE SUPPORT
IN BOTH ENGLISH & SPANISH
WITH TUTOR CRISTOBAL

QUESTIONS? CONTACT 707-521-6066

REMEMBER...

**GRADES AND
SCORES ARE
NOT A
DEFINITION OF
WHO YOU ARE**





MI CASA

Multicultural Innovative Center
for Academic Success & Achievement

.....

Week of May 21-24
(Week of finals)

M-Th: 8:30 am - 4:30 pm

.....

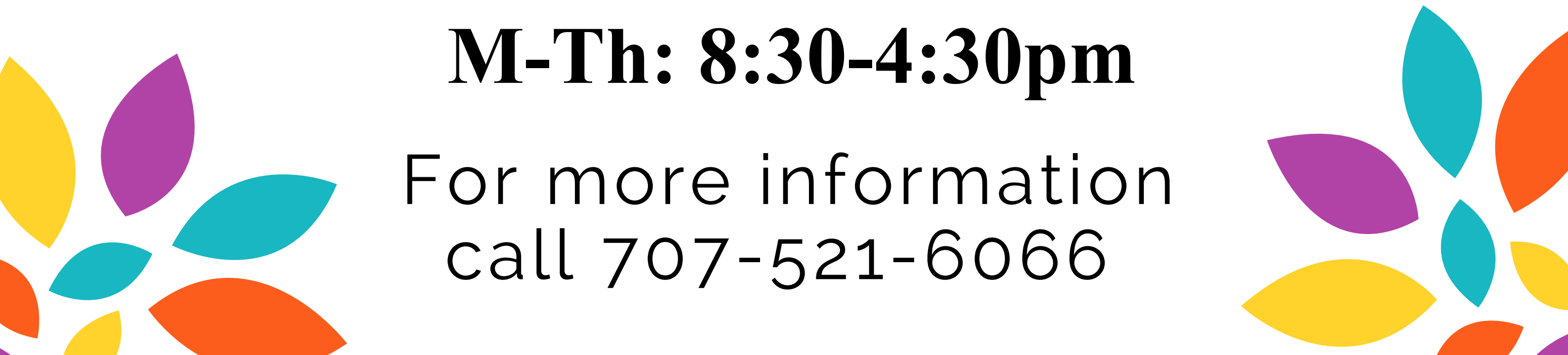
We will be closed from May
25-June 17

.....

Open Summer Semester 6/18-8/15

M-Th: 8:30-4:30pm

For more information
call 707-521-6066



BAY AREA & NORCAL RAPID RESPONSE

San Francisco
Rapid Response Network
HOTLINE: 415-200-1548

Sacramento Rapid Response
HOTLINE: 916-245-6773

SIREN's Rapid Response
TEXT ONLY, for Community
members: **201-468-6088**
& for Allies: **918-609-4480**

Marin County
Rapid Response Network
HOTLINE: 415-991-4545

Sonoma/Napa
Rapid Response Network
HOTLINE: 707-800-4544

Santa Clara County
Rapid Response Network
HOTLINE: 408-290-1144

Monterey County
Rapid Response Network
HOTLINE: 831-643-5225

Santa Cruz County
Your Allied Rapid Response
HOTLINE: 831-239-4289

Alameda County Immigration
Legal & Education Partnership
HOTLINE 510-241-4011

San Mateo
Rapid Response Network
HOTLINE: 203-NO MIGRA

OPEN 24/7! SUPPORT VARIES FROM:
*General questions - report /verify
ICE activity - legal observation - referrals
to attorneys - deportation defense
support - know your rights tools*

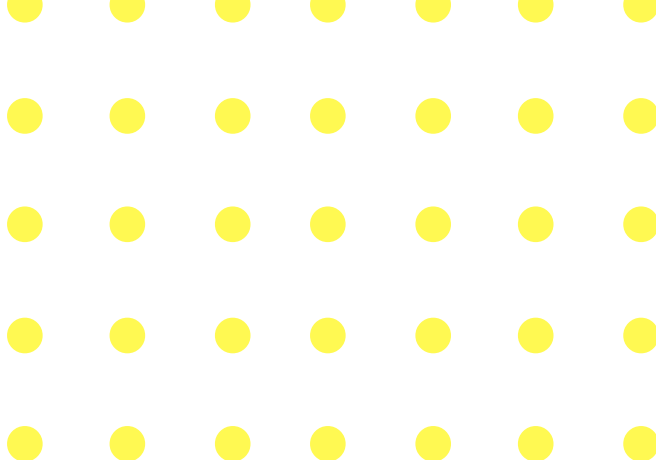


RAPID RESPONSE

REMEMBER...

**BELIEVE IN
YOURSELF AND ALL
THAT YOU ARE.
KNOW THAT THERE
IS SOMETHING
INSIDE OF YOU
THAT IS GREATER
THAN ANY
OBSTACLE.**





ENJOY YOUR BREAK!

questions? call 707.521.6066

